

LOCHRANZA CASTLE

A strathspey for 3 couples in a 4 couple set

BARS

- 1 – 2 1st and 2nd couples turn partner half way round left hand and retain partner's hand.
- 3 – 4 1st and 2nd couples dance left hand across half way round, retaining partner's hand.
- 5 – 8 2nd couple turn once round left hand to finish on the sidelines **as** 1st couple turn one and a quarter times to face 1st corners.
- 9 – 12 1st & 2nd corners dance a half double diagonal reel of 4 while 1st couple dance a half reel of four with 1st corners. On bar 12 1st couple turn with left hand three quarters to finish in the middle side by side, lady facing up, man down [diagram A].
- 13 – 16 1st man with 3rd & 2nd ladies, 1st lady with 3rd & 2nd men dance right hands across. On bar 16, 1st couple turn with left hand three quarters to face 2nd corner position [diagram B].
- 17 – 20 1st & 2nd corners dance a half double diagonal reel of 4 while , 1st couple dance a half reel of four with 2nd corners. On bar 20, 1st couple turn half way left hand to finish in the middle side by side, 1st woman facing up, 1st man down [diagram C].
- 21 – 24 1st man with 2nd & 3rd men, 1st lady with 2nd & 3rd ladies dance right hands across, and on bar 24, 1st couple turn half way left hand to finish in the middle, man facing up, lady facing down [diagram D].
- 25 – 28 1st man dances up and casts off round 2nd lady **as** 1st lady dances down and casts up round 3rd man. 1st couple turn half way with right hand to finish in the middle, man facing up and lady down.
- 29 – 32 1st man dances up and casts off round 2nd man **as** 1st lady dances down and casts up round 3rd lady.

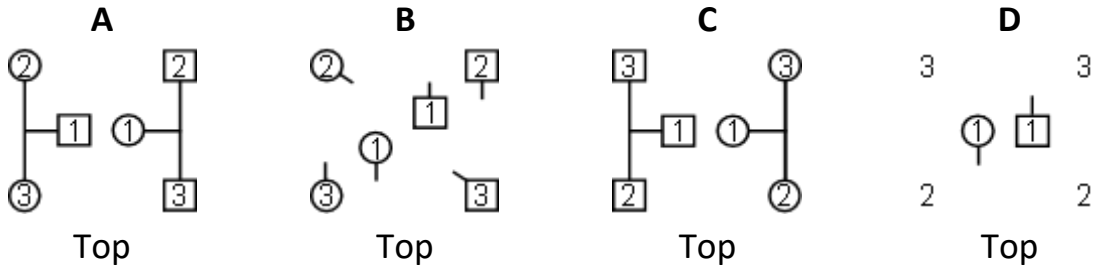
Repeat from 2nd place.

Recommended tune:- Lord Seaforth RSCDS Book 14

Devised by James McMillan

Situated on the North of Arran, the ancestral territory of the Clan MacMillan

LOCHRANZA CASTLE



| Lochranza Castle | J McMillan |
|---|--|
| <p>1 2 1 2 2 1</p> <p>T_L1/2 LA T_LT_L11/4</p> <p>retaining hands</p> | <p>to 2 3 bar 12</p> <p>T_L3/4</p> |
| <p> bar 16</p> <p>to RA T_L3/4</p> | <p>to 3 2 bar 20</p> <p>T_L1/2</p> |
| <p> bar 24</p> <p>to RA T_L1/2</p> | <p>to T_R1/2</p> |