

Suggested music: "The Winding Road" by Music Makers

Strathspey 3c,4cset (4x32)

For Ewa

1-8 1s,2s &3s dance a **Tupney turn**, then set on the sides & cross back Rh.

2s cross back moving up so as to centre the following Tpot at 2<sup>nd</sup> place.

9-12 1s cast 1 place & dance  $\frac{3}{4}$  Rh to end on the spine facing own side corners while..... 2s+3s dance  **$\frac{1}{2}$  Rh swirl Tpot**

At the start of b11, corners drive out strongly to clear the centre for the advancing 1s

13-16 1s dance a  $\frac{1}{2}$  reel across giving Rsh to their 4th corner & ending by spinning about clockwise to face up/down on the spine.

17-20 Taking hands across, all setR. On the last beat, all release hands & 1s spin clockwise to face their 1<sup>st</sup> corners. All setL 1s turn corners 2H & finish in 2<sup>nd</sup> place opposite sides facing across.

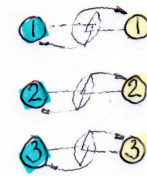
21-24 all repeat the above figure (which I call "passing the parcel") to put the 1s back on the spine, 1M in top place

25-28 1s dance a **L/R hook-turn**, but only turn  $\frac{1}{4}$  Rh & pull in to be face to face. On the last bar, spin (Rsh back) to finish back to back facing own sides

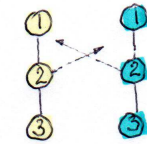
29-32 1s dance out & cast down into a  $\frac{1}{2}$  mirror reel of 3 on own sides. 2s & 3s complete this, but 1s dance  $\frac{1}{4}$  reel on down with the 4s to end 2 3 4 1

*This wandering and swirling dance just emerged, like magic, as I mused over the name while listening to the suggested music... a track with vocals which always brings me to happy tears.*

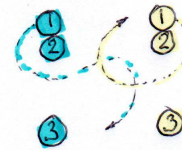
**Twists & Turns BP15** (see index) fully describes the highlighted new figures



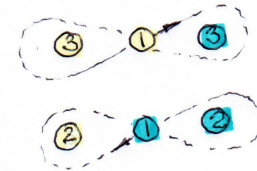
Tupney Turn across



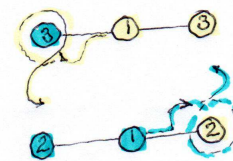
Set swap back (2s move up)



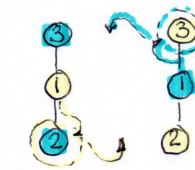
Leads cast, turn  $\frac{3}{4}$  Rh  
Corners dance  $\frac{1}{2}$  Rh swirl Tpot



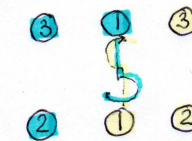
$\frac{1}{2}$  Rsh Reels.



"Pass the Parcel" x 2



Interlocking  $\frac{1}{2}$  reels



L/R hook-turn  
turning  $\frac{1}{4}$  = to face own sides