

FLICK O' THE KILT

- 1-4 1s + 2s advance PdBas on the diagonal to touch hands in a square, on bar 2, 1M & 2L (the 1st diagonal couple) set rotating & cast clockwise to interchange positions as the 2nd diagonal couple set & retire (skip change) to starting places.
- 5-8 1s + 2s dance RH across 1/2 way, The 2nd Diagonal couple (1L+2M) retain hand hold & dance a RH **swirl pass** * to become the inner dancers in the following spine reel of 4
As the 1st Diag dancers break away moving to the centre and casting back LSh to become the outer dancers. All face partner.... 1M 1L 2M 2L
- 9-16 Reel on the spine (start LSh) and return to original positions on the side.
- 17-24 Repeat bars 1-8 in mirror pattern. Now the 2nd diagonal couple rotate LSh back & dance anti-clockwise to interchange. All dance LH across & the 1st diagonal dancers LH swirl pass as the 2nd Diagonal dancers move to the centre & cast back RSh 1L 1M 2L 2M
- 25-32 1/2 Reel on the spine (start RSh), Birl with partner and return to side 2 1

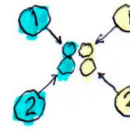
Repeat with 1s + 3s dancing, then return to starting from the top.... 6x32 bar music

* "swirl pass" This is normally danced in 4bars, but here snaps through in 2 to give the dance its name. In Bar 1, the dancers pass and turn back to face each other. In Bar 2 they release hands, continue turning and dance out to the opposite corner .

Livelier dancers may prefer the original conception which accelerates and staggers the turns:
In this, the lady turns under the man's arm to face her opposite corner on Bar 1 , then dances directly out to opposite corner on Br 2. The man dances straight in on Bar 1 releasing hands immediately the lady passes under and begins his turn. In Bar 2 he completes the turn as he dances out to corner.

R. 2c3set (B2x6)

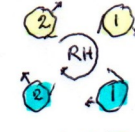
Flick o' the Kilt



Set Adv
Rsh backspin



Leads
Cast R



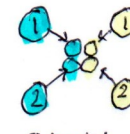
1/2 Rh Tpt.



Rh swirl
Underarm



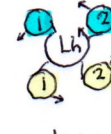
Lsh start
Spine reel



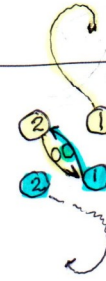
Set adv
Lsh spin about



Leads cast
L



1/2 Lh Tpt



Lh underarm
swirl pass



1/2 Rsh Reel



Synchronised
Birl to sides

Reel No. 1
GreenGinger

