

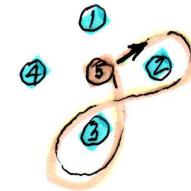
**Bardill/Prince 2007 Dances for sets of 5 individual dancers**

Reel 5,5,32,5 music "Water of Dryfe" by Colin Dewar

Echoes of Baudy

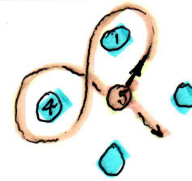
**Echoes of Baudy**

1-8 5 dances a reel of 3 with 2&3 giving Rsh to 2.



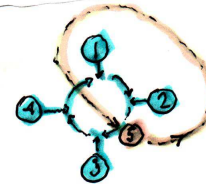
Rsh Reel.

9-16 5 dances a reel of 3 with 1&4 giving Lsh to 1. 5 ends by dancing SE between 2&3.

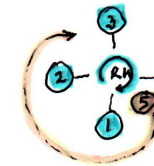


Lsh Reel.

17-20 5 casts L & dances halfway outside the set, re-entering from NW, dancing across & out again heading SE while..... corners Adv (Pasdebas), circle L 2 places & retire.



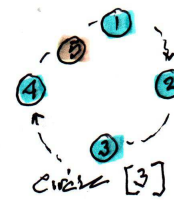
Corners :  
In, Circle 2pl, out  
[4]



Corners :  
1/2 RH Tpot.

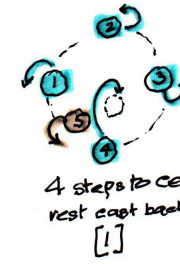
21-24 5 casts R & dances 1/2 way round outside the set to enter from NW, while.... corners dance 1/2 RH across . ) (Corners now back in start positions)

25-28 5 joins between 1&4 & all circle L for 3 places. On b28, all step-over & turn back except 4..... who slip-steps to the centre & turns clockwise to face 5

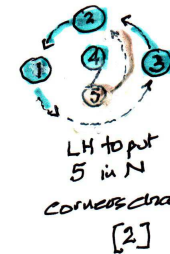


Circle [3]

29-32 5 & 4 turn LH in the centre to end with 5 (N) & 4 (centre) facing e/o while..... other corners chase a/c 2 places. All set (no hands).

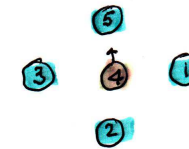


4 steps to centre  
rest cast back  
[1]



LH to put  
5 in N  
corners chase 2pl a/c  
[2]

	N	E	S	W	Centre facing
End	5	1	2	3	4 N



All set (in Restart positions)  
[2]

This dance is pretty lively and hopefully will recall the pleasure of dancing "Baudy Bain's Fiddle".